

Sister Cities Park: Next steps for improvement



2012: took a barren and forgotten space



Created a place for families with children



 **CENTER CITY DISTRICT**

Took a space without amenities



 **CENTER CITY DISTRICT**

And added a cafe



 **CENTER CITY DISTRICT**

Took a solitary neglected statue



 **CENTER CITY DISTRICT**

Wrapped a children's garden around it



 CENTER CITY DISTRICT

Added Robert Indiana's Amor at southern end



 CENTER CITY DISTRICT

Fountain towards the southern end



 CENTER CITY DISTRICT

Change of café operator: Brulee started April 1st



 CENTER CITY DISTRICT

More child-friendly menu



 CENTER CITY DISTRICT

Upgraded interior furniture



 CENTER CITY DISTRICT

West facing window



 CENTER CITY DISTRICT

Bar stool seating to view Swann Fountain



 CENTER CITY DISTRICT

Improve capacity to cater events



 CENTER CITY DISTRICT

Northern end: Children's Discovery Garden



 CENTER CITY DISTRICT

Inside the garden: pond



 CENTER CITY DISTRICT

Designed for young children



 CENTER CITY DISTRICT

October: drain pond; add Imagination playground



Climbing rocks

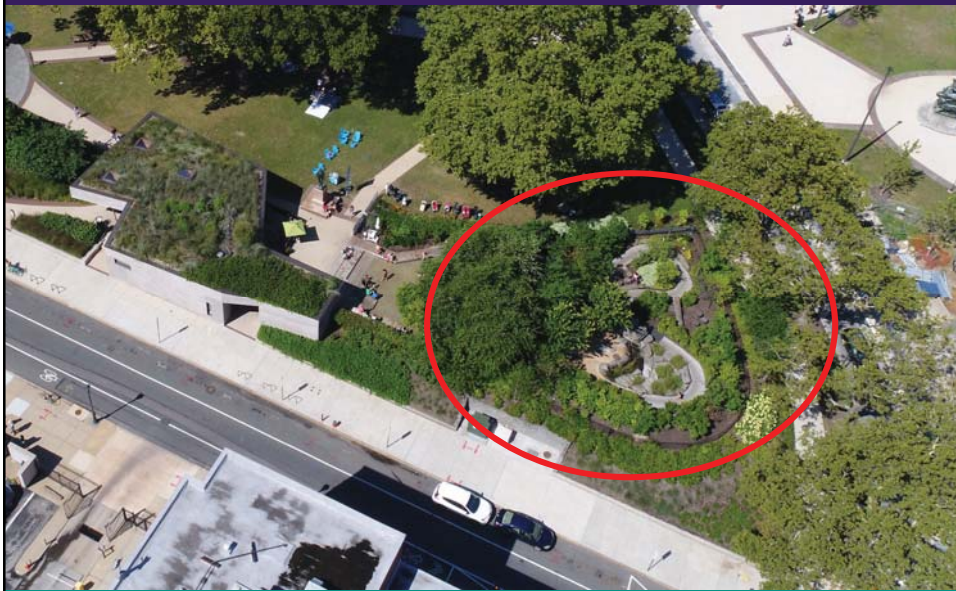


With a mountain stream



 CENTER CITY DISTRICT

Improving the Children's Discovery Garden



 CENTER CITY DISTRICT

Retained design team: Studio Bryan Hanes

02

STUDIO|BRYAN HANES

BRYAN D. HANES,
ASLA, LEED

Studio|Bryan Hanes
Principal

PROFESSIONAL REGISTRATION
Landscape Architect Indiana, Pennsylvania,
New York, New Jersey, Delaware

EDUCATION
Bachelor of Landscape Architecture,
Oklahoma State University

PROFESSIONAL AFFILIATIONS
American Society of Landscape Architects



ABOUT

Bryan Hanes is the founding principal of Studio|Bryan Hanes. He is a Registered Landscape Architect in Pennsylvania, Delaware, New York, New Jersey, and Indiana and LEED Accredited Professional. Bryan has been involved in work ranging from significant urban and open space planning and design projects, to small-scale designs for institutional and private clients. Each project strives to acknowledge an understanding of the natural and cultural systems of a site.

Prior to forming Studio|Bryan Hanes, Bryan spent nearly a decade at the internationally acclaimed office of Olin Partnership where he served as Associate-in-Charge of the transformation of major public spaces across the country and around the world. His contributions to the regeneration of Philadelphia's public spaces include Independence National Historical Park, the Benjamin Franklin Parkway Framework Plan, Logan Square, Sister Cities Garden at Logan Square, Penn Treaty Park, Clark Park and the Philadelphia Museum of Art Sculpture Garden and Parking Garage.

PROFESSIONAL WORKS

Reading Viaduct, Septa Spur Philadelphia, PA
Sister Cities Garden at Logan Square Philadelphia, PA
Per 68 Philadelphia, PA
Penn Treaty Park Master Plan Philadelphia, PA
Pittsburgh Greenways w/ Pittsburgh, PA
South Side Park Master Plan Pittsburgh, PA
Clark Park & Park Redesign Philadelphia, PA
Centerline District Master Plan Update Philadelphia, PA
Centennial Commons Parkside Lodge Philadelphia, PA
Centennial Commons Youth Area Philadelphia, PA
Cynwyd Heritage Trail and Park Lower Merion Township, PA
Esplanade at Historic 30th St. Post Office Philadelphia, PA
Shakespeare Garden at Logan Square Philadelphia, PA
Callowhill/Christown North Strategic Plan Philadelphia, PA
The College of New Jersey Brower Student Center, Ewing, NJ
Greenell College Zone of Confluence Master Plan Cincinnati, OH
Smith Memorial Playhouse Gateway & Play Area Philadelphia, PA
Swarthmore College NPP Residence Halls Swarthmore, PA
Cornell University LAC Master Plan and Teaching Dairy Barn Ithaca, NY
Sidwell Friends School Entry Plaza Washington, DC
Carmichael Friends School Campus Assessment Philadelphia, PA
Matchbox Fitness Center at Swarthmore College Swarthmore, PA

Perry World House at the University of Pennsylvania Philadelphia, PA
University of Delaware Academy Street Dining & Residence Newark, DE
Congregation Rosh Chodesh Philadelphia, PA
Penn Museum University of Pennsylvania Philadelphia, PA
Rosenbach Museum Philadelphia, PA
Corning Museum of Glass Corning, NY
Bancroft School Redevelopment Plan Haddonfield, NJ
WOKO Building at the Navy Yard Philadelphia, PA

PRACTICE AREAS

Institutional/Academic, Master Planning, Urban Design, Sustainable
Landscape Architecture

HONORS, AWARDS, AND PUBLICATIONS

Les Jardins de Mém International Garden Festival 2010-2011
PA/DE ASLA Merit Award Sister Cities Garden
PA/DE ASLA Merit Award Plaza at University of
Delaware International Downtown Assoc. Merit Award Sister Cities Garden
PA/DE ASLA Honor Award Penn Treaty Park Master Plan
PA/DE ASLA Merit Award Cynwyd Heritage Trail Vision Plan
USGBC LEED Project of the Year 2010 Houses
Sustainable Sites Initiative Pilot Project Penn Treaty Park Master Plan

16 |

CENTER CITY DISTRICT

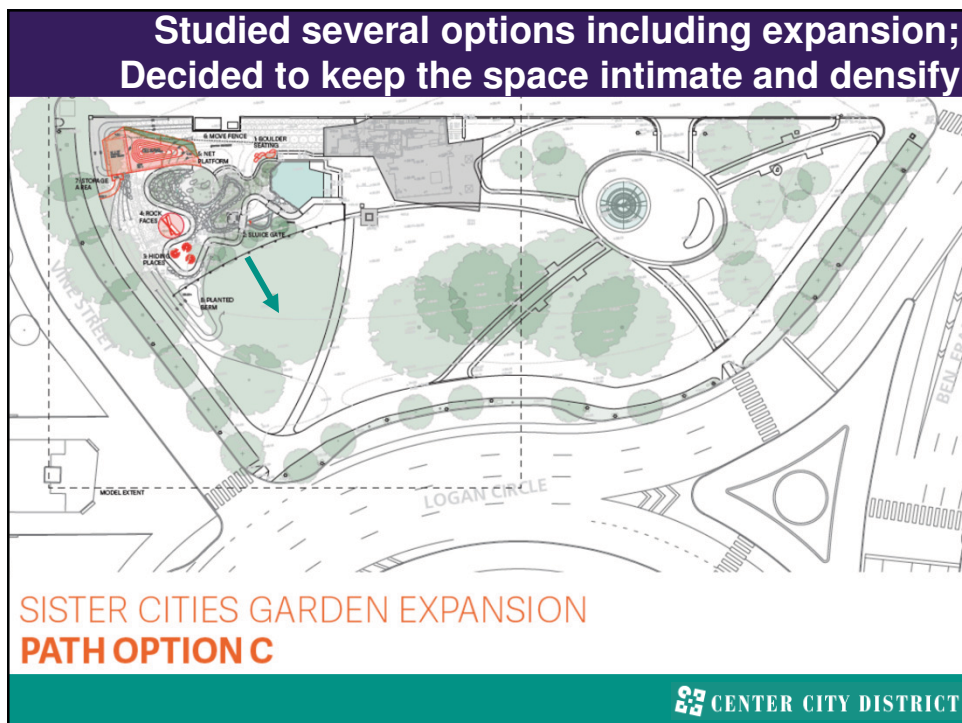
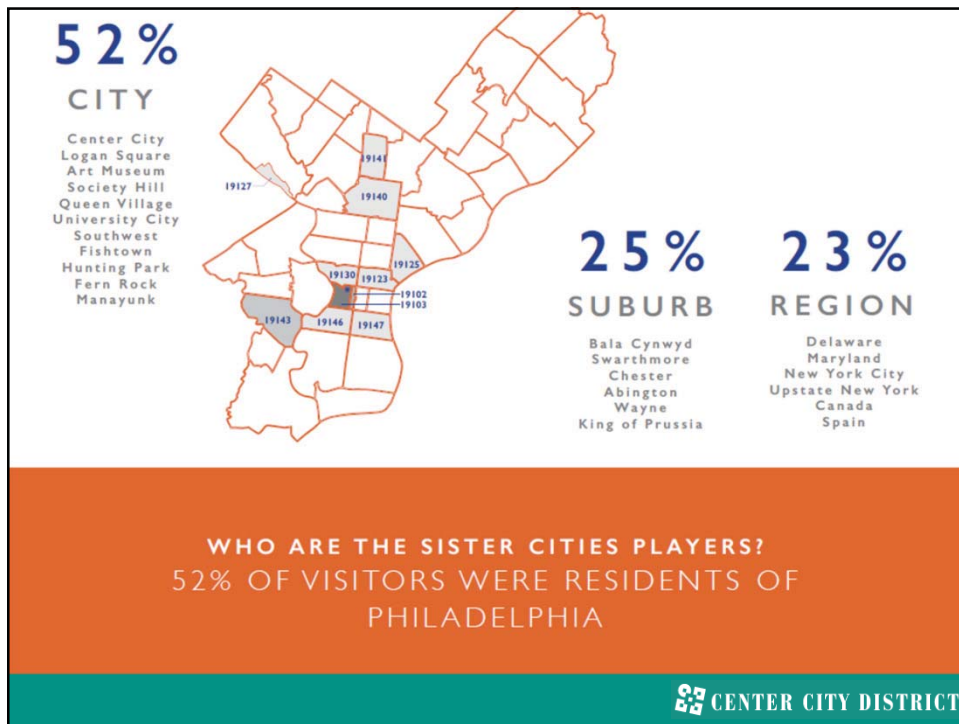
Meghan Talarowski: site observations; 40 detailed surveys



STUDIO LUDO

BUILDING BETTER PLAY THROUGH RESEARCH,
DESIGN, AND ADVOCACY

CENTER CITY DISTRICT



**Park serves young children very well,
But they are getting older**



 CENTER CITY DISTRICT

**Add more gathering & play spaces within garden
& for slightly older children – up to 8 years old**



 CENTER CITY DISTRICT

5 new play locations + more seating for tired parents



Water pump at the top of the mountain



Create new stopping points in the stream



 CENTER CITY DISTRICT

Create new play opportunities in the stream



 CENTER CITY DISTRICT

Sluice gates to dam up the stream



 CENTER CITY DISTRICT

Add hiding huts along the trail



 CENTER CITY DISTRICT

Add hiding huts along the trail



 CENTER CITY DISTRICT

Add climbing logs



 CENTER CITY DISTRICT

Add climbing logs along the trail



 CENTER CITY DISTRICT

Expand play area at the mountain top



 CENTER CITY DISTRICT

New platform with climbing nets expands park

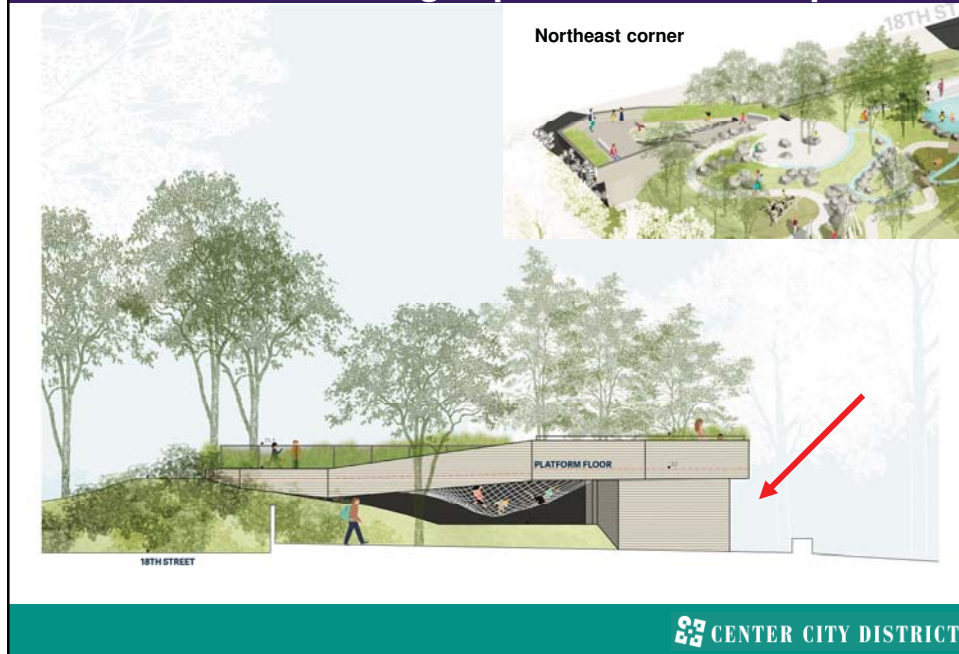


Install new climbing, play nets



 CENTER CITY DISTRICT

Insert storage space beneath the platform



Northeast corner



Access storage from north sidewalk



More things to do within the existing space

