



# 2000 Arch Street Filling Station

---

Relocation & Restoration Project

**ATKIN OLSHIN SCHADE** ARCHITECTS



**KH** KEAST & HOOD  
STRUCTURAL ENGINEERS

**Ground** Reconsidered



# Existing Site Plan

DISTRICT	COUNTY	ROUTE	SECTION	SHEET
6-0	PHILADELPHIA	71213	LSL	8 OF 14
<div style="border: 1px solid black; height: 100px; width: 100%;"></div>				
REVISION NUMBER	REVISIONS			DATE BY
1				
2				
3				
4				
5				
6				
7				
8				
9				
10				
11				
12				
13				
14				
15				
16				
17				
18				
19				
20				
21				
22				
23				
24				
25				
26				
27				
28				
29				
30				
31				
32				
33				
34				
35				
36				
37				
38				
39				
40				
41				
42				
43				
44				
45				
46				
47				
48				
49				
50				
51				
52				
53				
54				
55				
56				
57				
58				
59				
60				
61				
62				
63				
64				
65				
66				
67				
68				
69				
70				
71				
72				
73				
74				
75				
76				
77				
78				
79				
80				
81				
82				
83				
84				
85				
86				
87				
88				
89				
90				
91				
92				
93				
94				
95				
96				
97				
98				
99				
100				

PLANT LIST						
TREES						
KEY	QTY.	SCIENTIFIC NAME	COMMON NAME	ROOT	SIZE	COMMENTS
AH	2	<i>Aesculus hippocastanum</i>	Common Horsechestnut	B&B	2 1/2" - 3"	
CK	8	<i>Cladrastis kentuckea</i>	American Yellowwood	B&B	2 1/2" - 3"	
GD	3	<i>Gymnocladus dioica</i>	Kentucky Coffeetree	B&B	2 1/2" - 3"	
PA	7	<i>Platanus x acerifolia</i> "Yarwood"	Yarwood London Planetree	B&B	2 1/2" - 3"	
QA	9	<i>Quercus acutissima</i>	Sawtooth Oak	B&B	2 1/2" - 3"	

SHRUBS						
KEY	QTY.	SCIENTIFIC NAME	COMMON NAME	ROOT	SIZE	COMMENTS
Az	7	<i>Azalea 'Delaware Valley White'</i>	White Azalea	Cont.	24" ht.	
Fg	6	<i>Fothergilla gardenii</i>	Dwarf Fothergilla	Cont.	36" ht.	
Iv	10	<i>Itea virginica 'Sprich'</i>	Little Henry Virginia Sweetspire	Cont.	36" ht.	
Rp	11	<i>Rhododendron prinophyllum</i>	Rosehells Rhododendron	Cont.	24" ht.	
Vc	8	<i>Viburnum carlesii 'Compactum'</i>	Compactum Korean Spice Viburnum	Cont.	36" ht.	

PERENNIALS						
KEY	QTY	SCIENTIFIC NAME	COMMON NAME	ROOT	SIZE	COMMENTS
ahy	32	<i>Anemone x hybridis</i> 'September Charm'	September Charm Anemone	Cont.		
aa	80	<i>Astilbe arendsii</i> 'Anita Pfeiffer'	Anita Pfeiffer Astilbe	Cont.		
ep	16	<i>Echinacea purpurea</i> 'Bravado'	Bravado Purple Coneflower	Cont.		
fi	159	<i>Festuca idahoensis</i> 'Siskiyou Blue'	Siskiyou Blue Idaho Fescue			
hh	10	<i>Helleborus x hybridis</i>	Lenten Rose	Cont.		
hi	31	<i>Hosta sieboldiana</i> 'Elegans'	Elegans Hosta	Cont.		
is'B'	50	<i>Iris siberica</i> 'Butter and Sugar'	Butter and Sugar Siberian Iris	Cont.		
is'C'	25	<i>Iris siberica</i> 'Caesar's Brother'	Caesar's Brother Siberian Iris	Cont.		
lh	85	<i>Lilium x hybrida</i> 'Chivalry'	Chivalry Asiatic Lily	Cont.		
lc	24	<i>Lysimachia clethroides</i>	Gooseneck Loosestrife	Cont.		
ps	77	<i>Pennisetum setaceum</i> 'Rubrum'	Deep Purple Fountaingrass	Cont.		
pp'M'	32	<i>Phlox paniculata</i> 'Mt. Fuji'	Mt. Fuji Phlox	Cont.		
pa	54	<i>Pteridium aquilinum</i>	Bracken Fern	Cont.		

PLANTING NOTES:

1. ALL EXISTING LAWN AREAS ARE TO BE PREPARED FOR SEEDING BY CULTIVATING AND AERATING EXISTING SOIL, ADDING TOPSOIL IF REQUIRED, ROLLING AND SEEDING.
2. LAWN AREAS THAT ARE LOCATED INSIDE TREE PROTECTION ZONES SHALL BE REMEDIATED AS FOLLOWS:
  - SCARIFY, CAREFULLY, TO NOT MORE THAN 2" DEPTH.
  - INCORPORATE TOPSOIL TO MEET EXISTING GRADES.
  - SEED AS SPECIFIED.
3. IN ALL AREAS WHERE EX. PAVEMENTS ARE TO BE DEMOLISHED AND REPLACED WITH LAWN/ PLANTING BED:
  - A. REMOVE RESIDUAL PAVEMENT, BASE MATERIALS OR CONSTRUCTION DEBRIS AND EXCAVATE TO 12" BELOW DESIGNATED GRADE.
  - B. REPLACE WITH TOPSOIL.
  - C. PLANT AND PROTECT AS SPECIFIED.
4. LAYOUT OF PLANT BEDS, TREE AND SHRUB LOCATIONS SHALL BE STAKED OUT IN THE FIELD FOR REVIEW BY LANDSCAPE ARCHITECT PRIOR TO START OF ANY PLANT BED PREPARATION.
5. EXERCISE EXTREME CARE WHEN PLANTING AND AMENDING SOIL IN THE ROOT ZONE OF EXISTING TREES. HAND DIG TO DETERMINE EXTENT OF ROOTS, AND ADJUST SOIL AMENDMENT AND PLANT SOIL PROFILE AS NEEDED.
6. IRRIGATION TO BE PROVIDED IN ALL PLANTING AND LAWN AREAS COORDINATE DESIGN WITH OWNER AND LANDSCAPE ARCHITECT PRIOR TO INSTALLATION.
7. CONFIRM THAT ALL AREAS THAT WERE FORMERLY PAVED AND ARE TO BECOME LAWN HAVE BEEN PROPERLY EXCAVATED.

12" EXISTING SOIL TO BE REMOVED BY LANDSCAPE CONTRACTOR WITH LANDSCAPE ARCHITECT AND OWNER PRESENT. SOIL SHALL BE REPLACED WITH NEW TOPSOIL.

UNDER THE CANOPIES OF EXISTING TREES USE THE APPROPRIATE EQUIPMENT TO FRACTURE EXISTING SOIL AND CAREFULLY INCORPORATE 10" OF NEW TOPSOIL.

LEGEND

EXISTING TREE TO

NEW TREE

DECIDUOUS SHRUB  
AND PERENNIAL  
BORDER

EXISTING LAWN  
AREAS TO REMAIN

PAVED AREAS TO

### EXTENT OF TREE PROTECTION ZONES

CONTINUOUS TREE TRENCH  
WITH GRANITE  
COBBLES ON TOPSOIL



CLIENT: CENTRAL PHILADELPHIA  
DEVELOPMENT CORPORATION

660 CHESTNUT STREET  
PHILADELPHIA, PA 19106

SCALE:  
1"=20'

---

DRAWN BY:  
LN

DATE:  
JANUARY 27, 2006

---

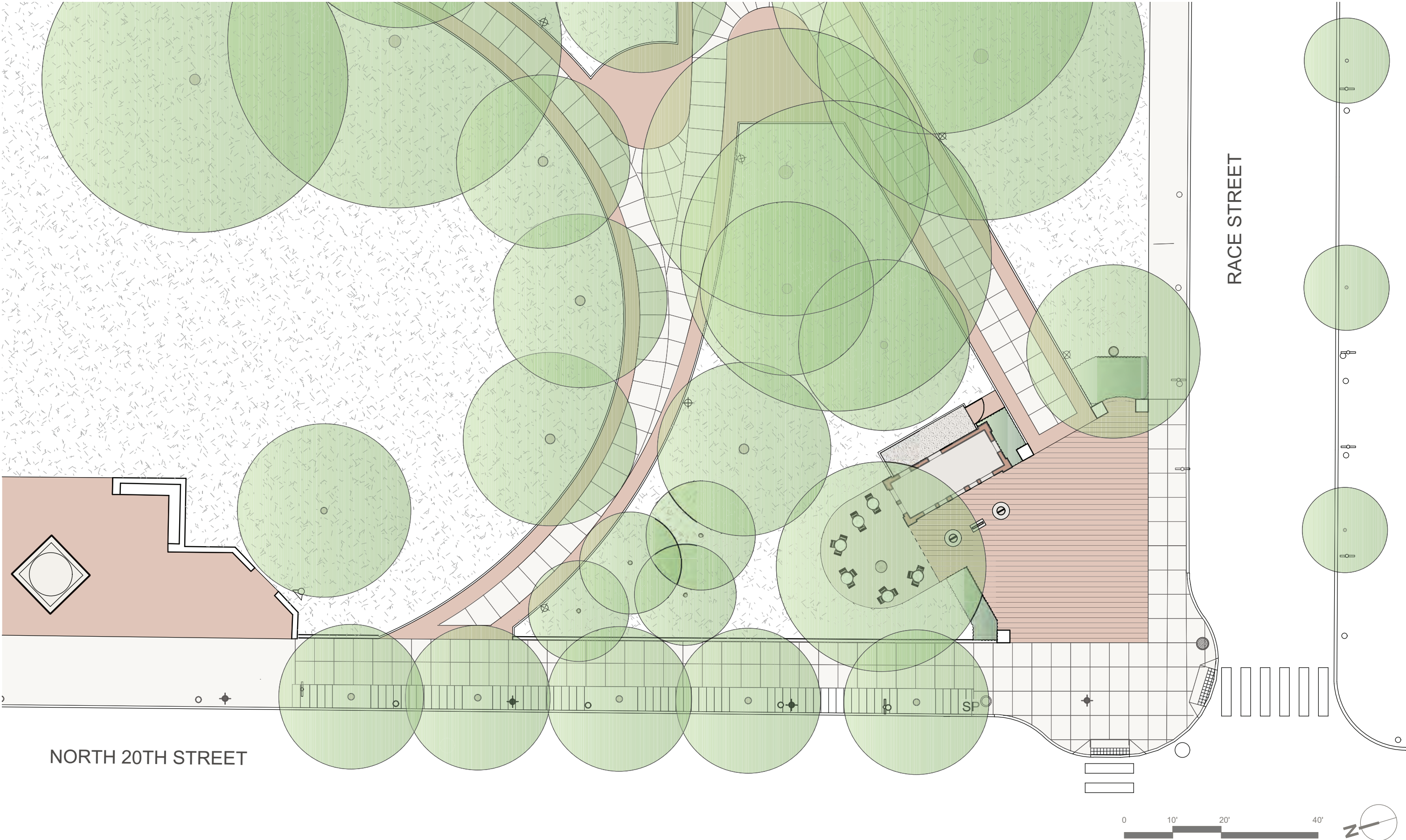
CHECKED BY:  
PR

LOGAN SQUARE  
LANDSCAPE IMPROVEMENT PROJECT  
PHASE 1: AVIATOR PARK  
100% CONSTRUCTION DOCUMENTS

URBAN ENGINEERS, INC.  
530 WALNUT STREET, 14th FLOOR  
PHILADELPHIA, PA 19106  
P 215 922 8080  
F 215 922 8082

LAGER RAABE SKAFTE  
LANDSCAPE ARCHITECTS, INC.  
230 SOUTH BROAD STREET  
SUITE 604  
PHILADELPHIA, PA 19102  
P 215 790 0727  
F 215 790 0949

# Proposed Site Plan





Historic Photos





Existing Conditions





Existing Conditions





Existing Conditions





# Existing Conditions







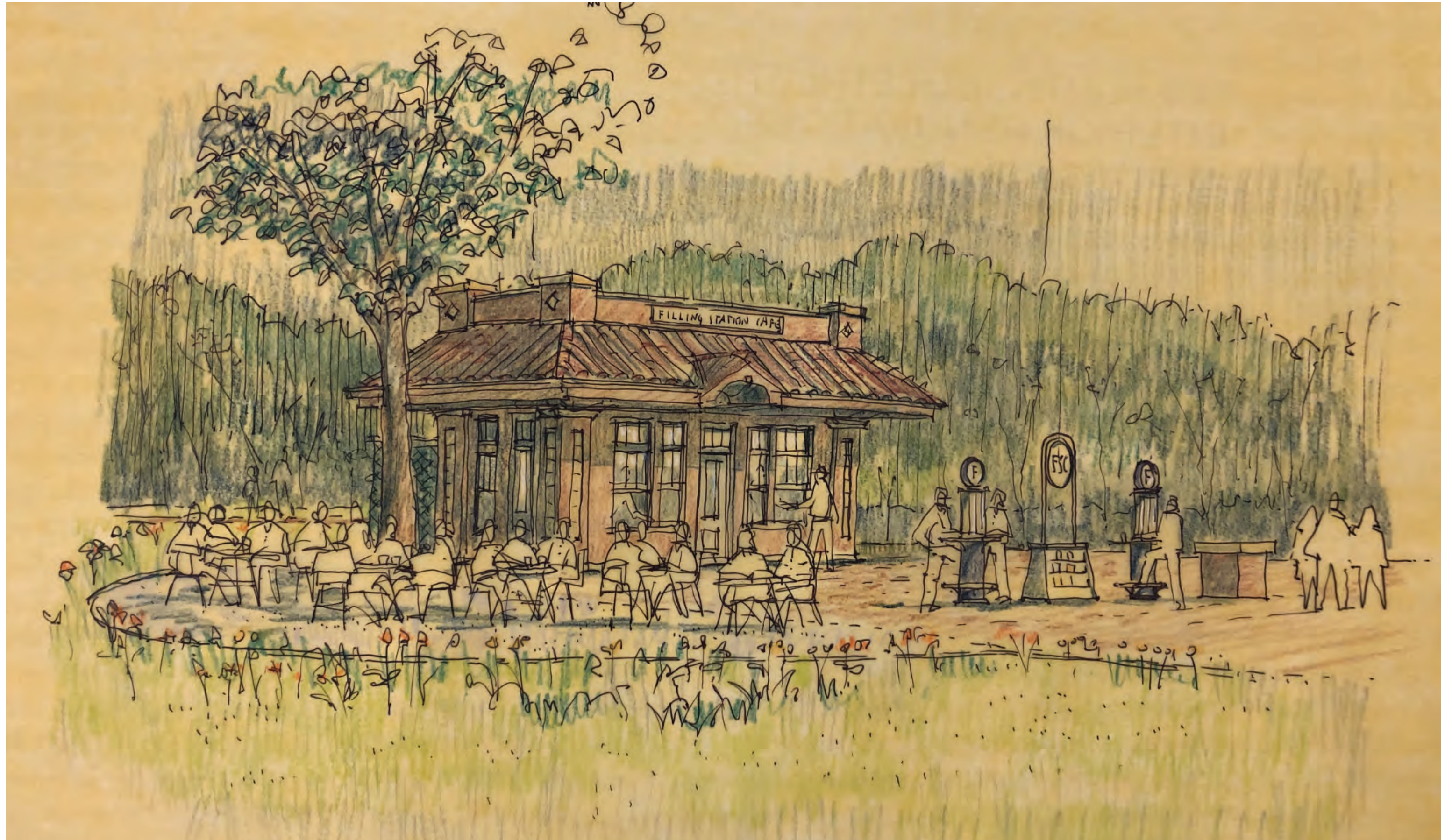


# Gulf Gas Station, Tazewell TN, circa 1940



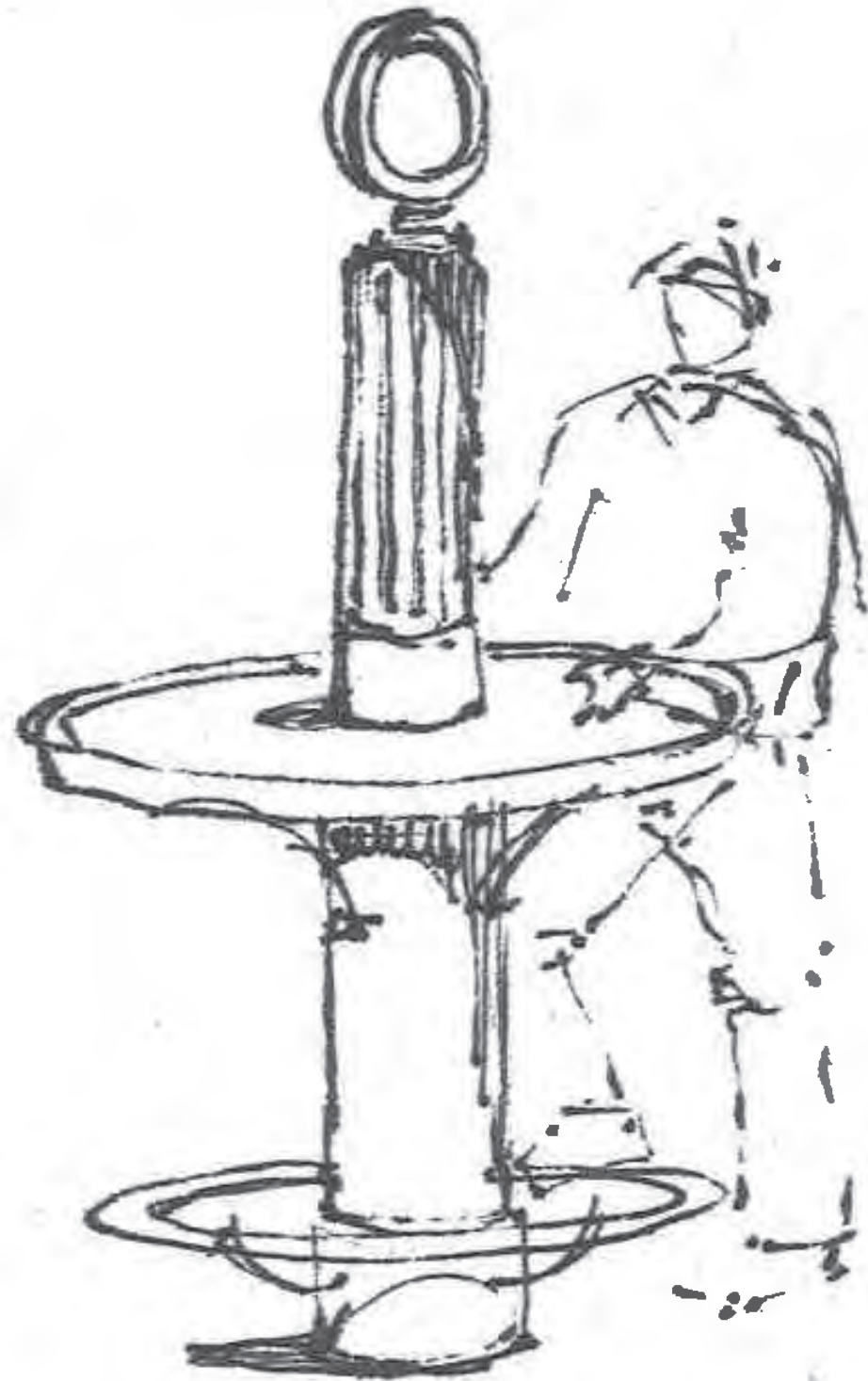


# Concept Sketch Looking South-East

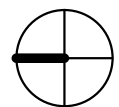
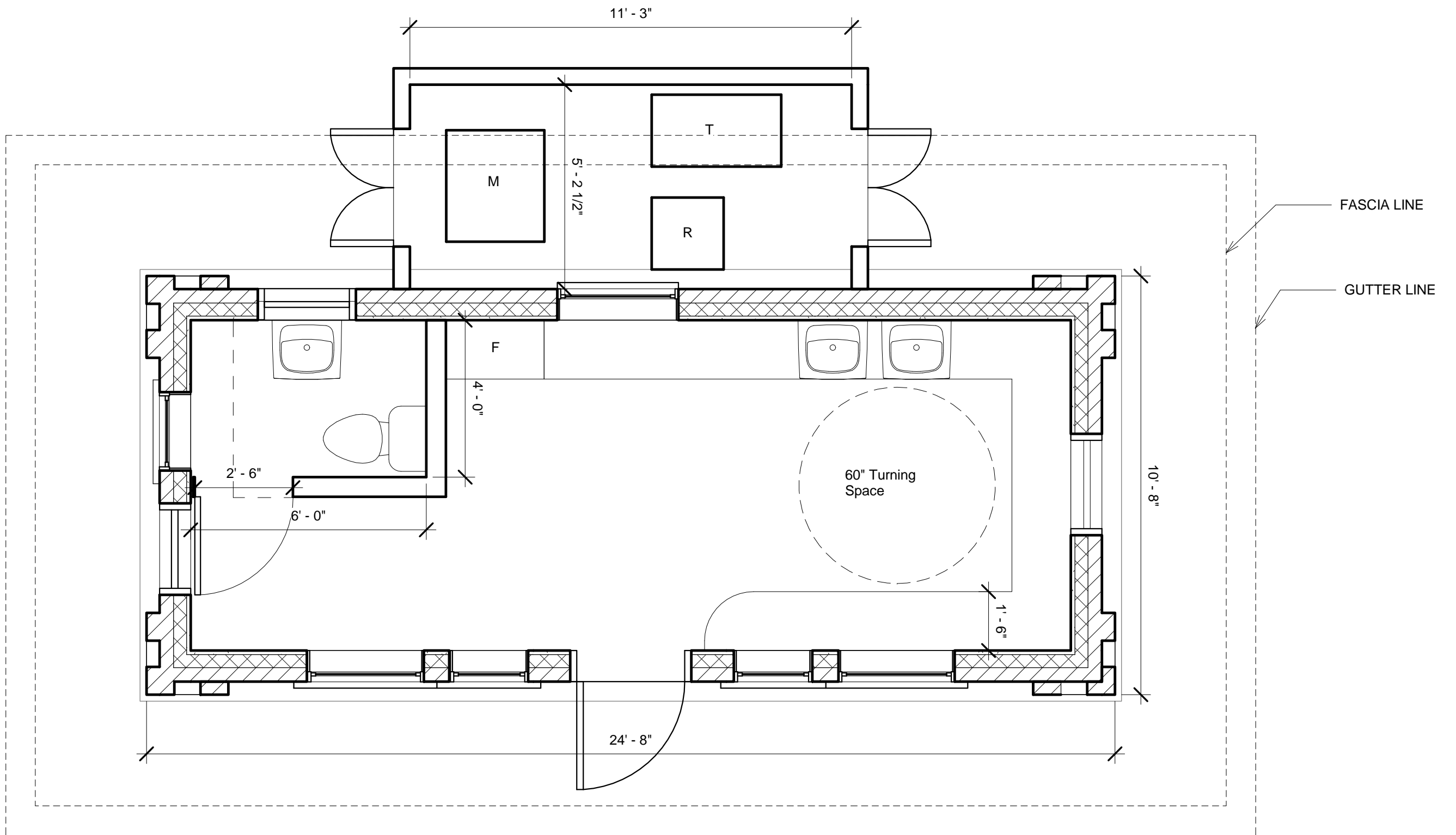




# Standing Counter / Filling Station Pump Inspiration

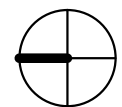
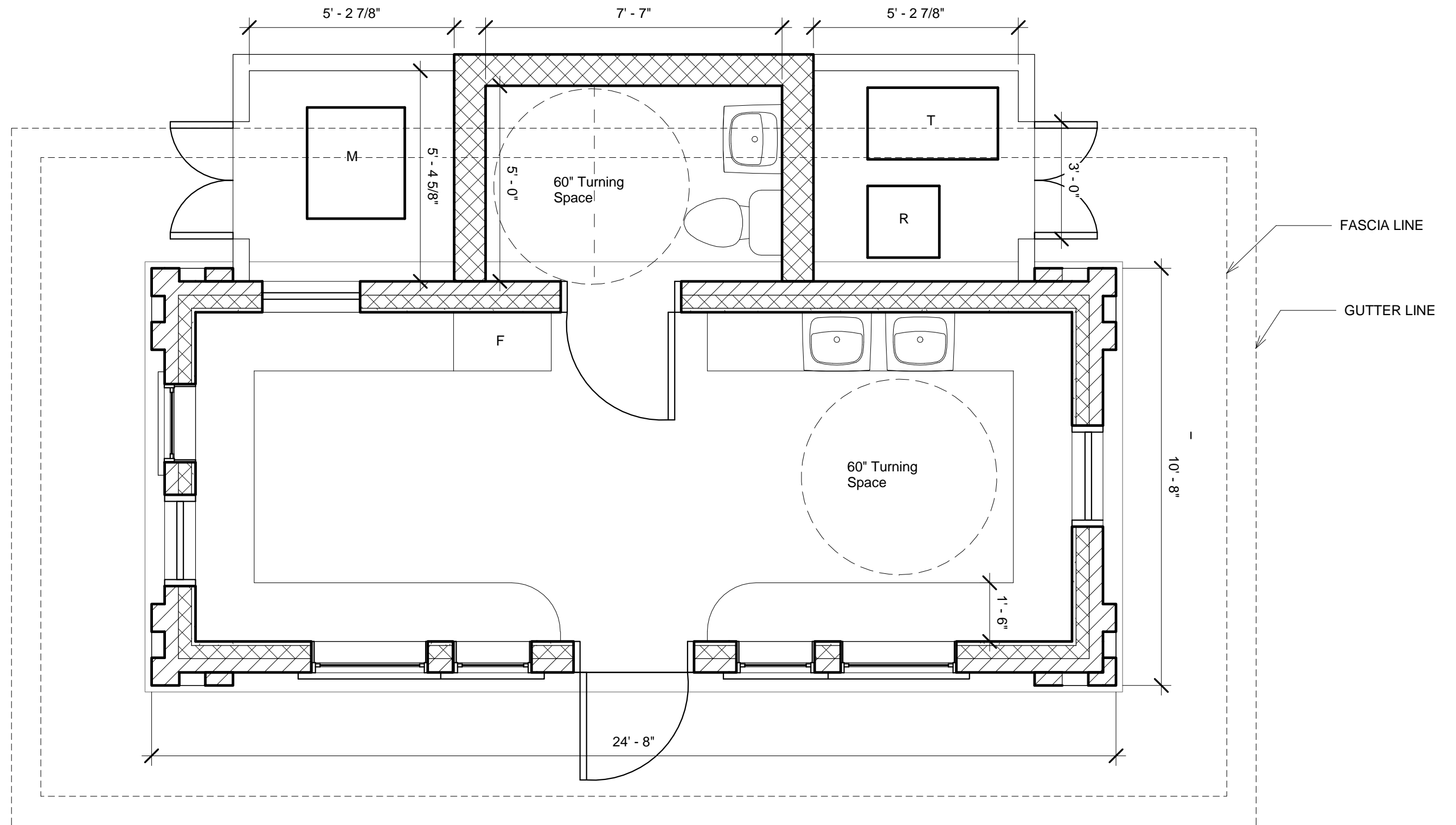






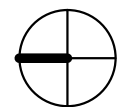
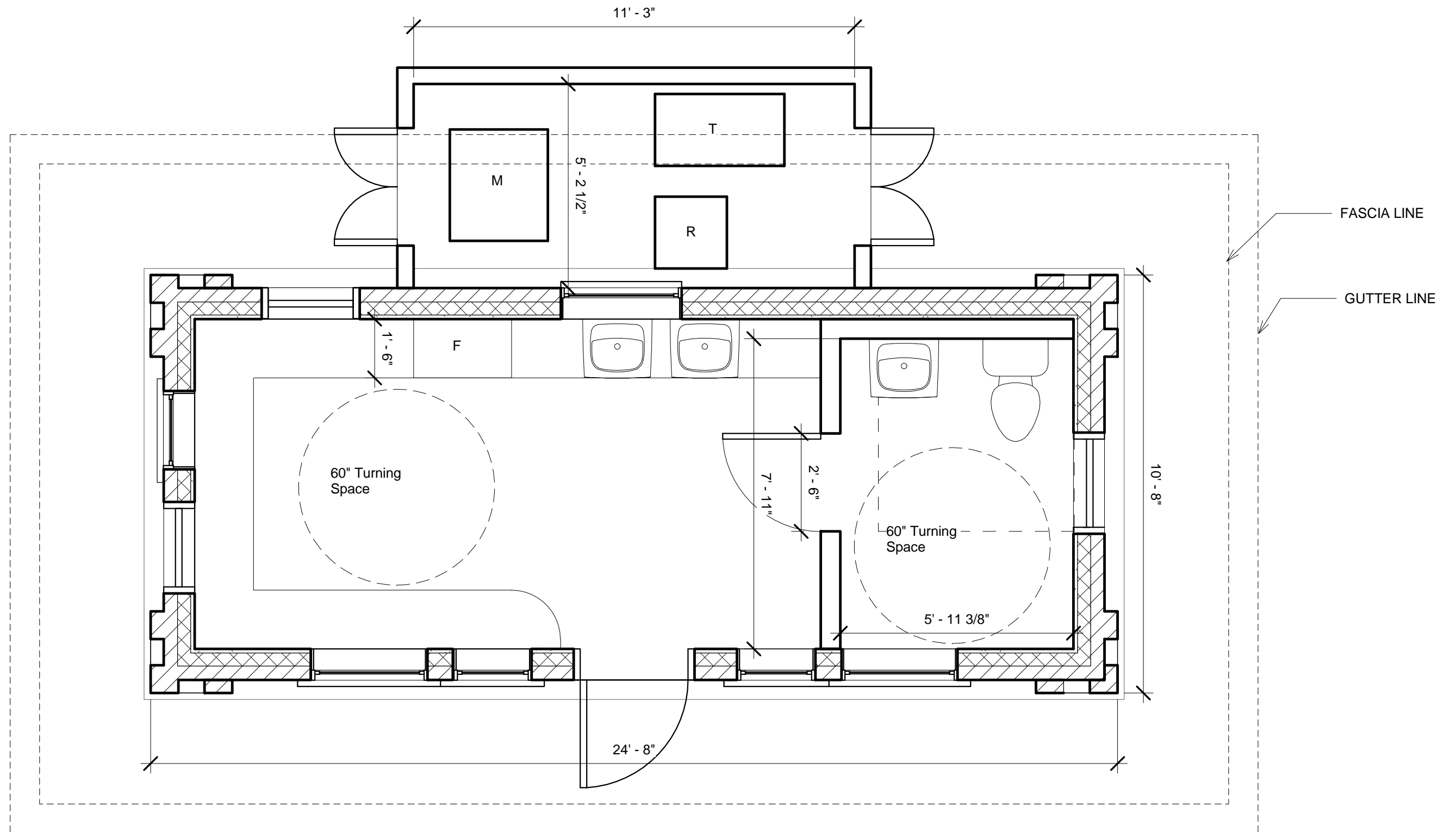
① Floor Plan - Bathroom Option 1  
3/8" = 1'-0"





① Floor Plan - Bathroom ADA Exterior  
3/8" = 1'-0"





① Floor Plan - Bathroom ADA Interior  
3/8" = 1'-0"